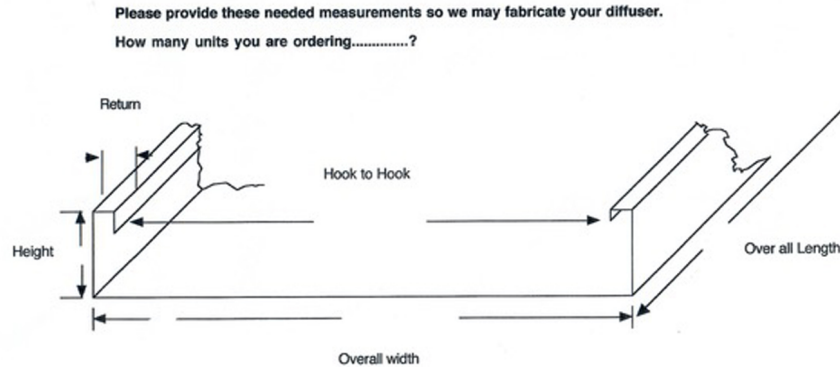
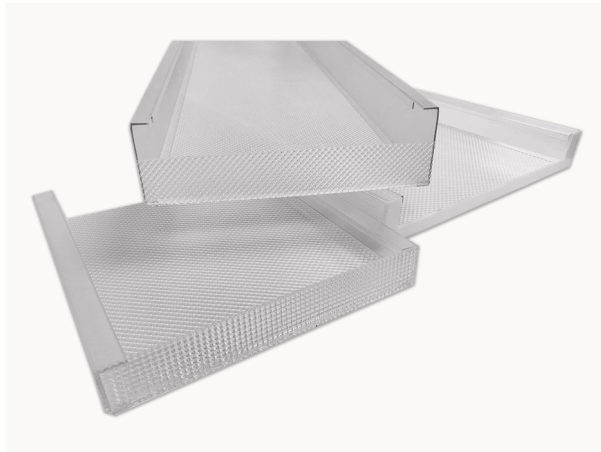


Ordering Replacement Lenses from PARS is easy



1. Measure length, width & depth of your old lens.
 2. Specify Color: Prismatic OR White
 3. Tell us how many units you need.
 4. Provide contact information
 5. Email or fax your request to PARS Lighting.
- Quantity:
6. Give us the requirement measurements as in the drawing.
- Finishes:

Call our office for assistance. We are here to serve you.

Contact Name:	
Company:	
Phone:	
Fax:	
Address:	
City, State, Zip	
Comments:	